



# INSTALLATION GUIDE

Maxiflex P3e CPU  
M1262G

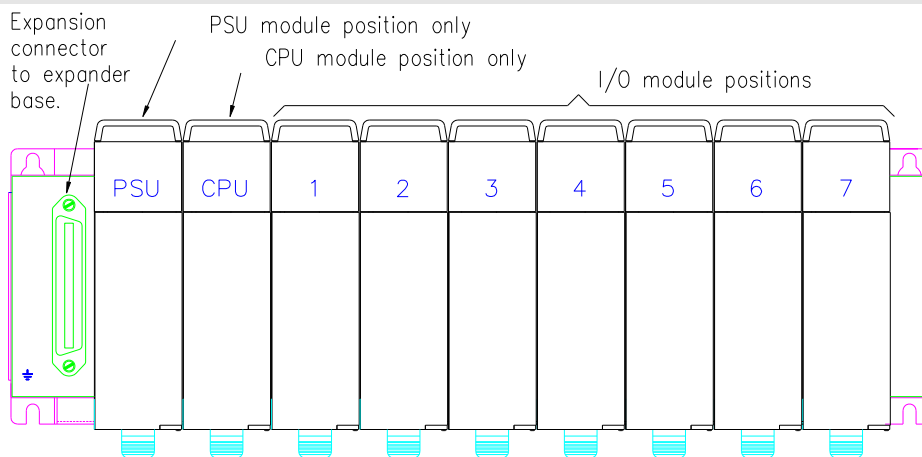
## Introduction

*This Installation Guide is intended to aid the fitment of the M1262 CPU in the field. For operating details of this product, refer to the Users' Manual. Please read this Installation Guide first before installing this unit.*

The Maxiflex P3e CPU is designed specifically for applications requiring PLC programming, offering industry standard IEC61131 programming capabilities combined with powerful industrial network communications features.

It is always fitted into the CPU slot of a Maxiflex master base, next to the PSU module. See figure 1. It has one port which is a configurable serial port. This port has a DIP switch for address and parameter settings. The M1262 is equipped with an Ethernet and serial port. RAM is battery backed so that application program variables are not lost on power down, the battery will be connected if you have an Omniflex application loaded already. If you are starting with a fresh CPU from stock the battery will need to be connected.

Figure 1 : Module Positions



Note: The exact position of the I/O module will depend on the system configuration.

## Hardware Installation Procedure

1. If the BATTERY is required then connect jumper located in the front of the module, just above the DB-9 serial port connector. Remove paper strip which says PULL TO CONNECT BATTERY. The Real time clock must then be set.
2. If the CPU is going to be programmed use Programming port cable M1831 which is available as an accessory (Model No. M1831).
3. Plug the CPU into the CPU slot (as per Figure 1).

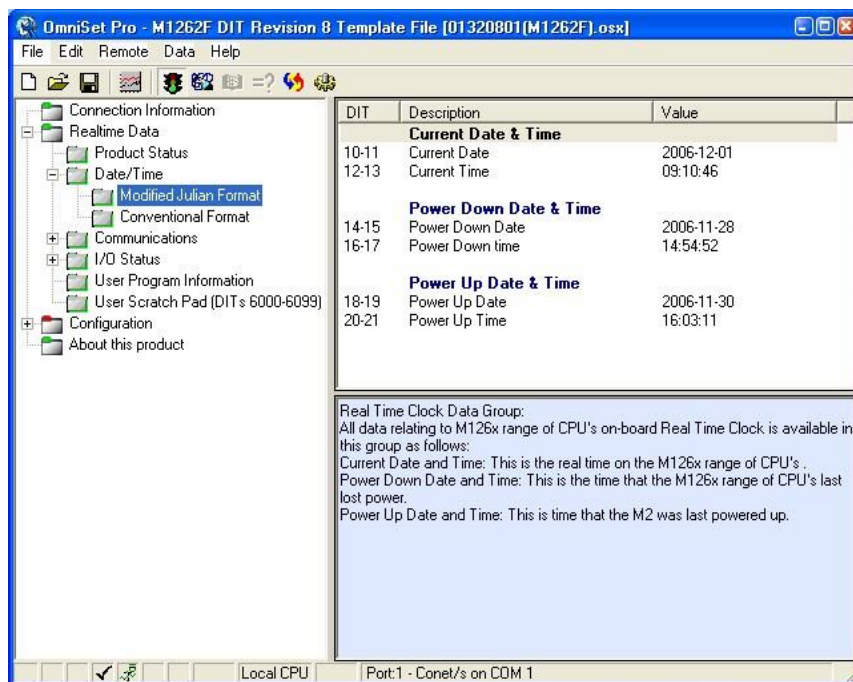
## Software Requirements

Omniset is the PC utility that is used to configure the unit.

## Cofiguring the Realtime Clock(RTC)

1. Assemble the Maxiflex base as shown in Figure 1 with the M1262 fitted into the CPU slot and a suitable Maxiflex PSU in the PSU slot
2. Connect power to your system.
3. Connect the M1831 programming cable between the COM port of your PC/laptop and the programming port of the Maxiflex CPU.
4. Open Omniset and click on File->Connect->Maxiflex CPU TAB.

Select the GROUP Configuration->Ports->Realtime Data->Date/Time which is found in the left hand pane. Change the RTC settings by pointing the mouse to the ITEM you wish to change and clicking on the right mouse button and selecting the New Value option that pops up. Enter you new setting when prompted. Refer to screen grab below.



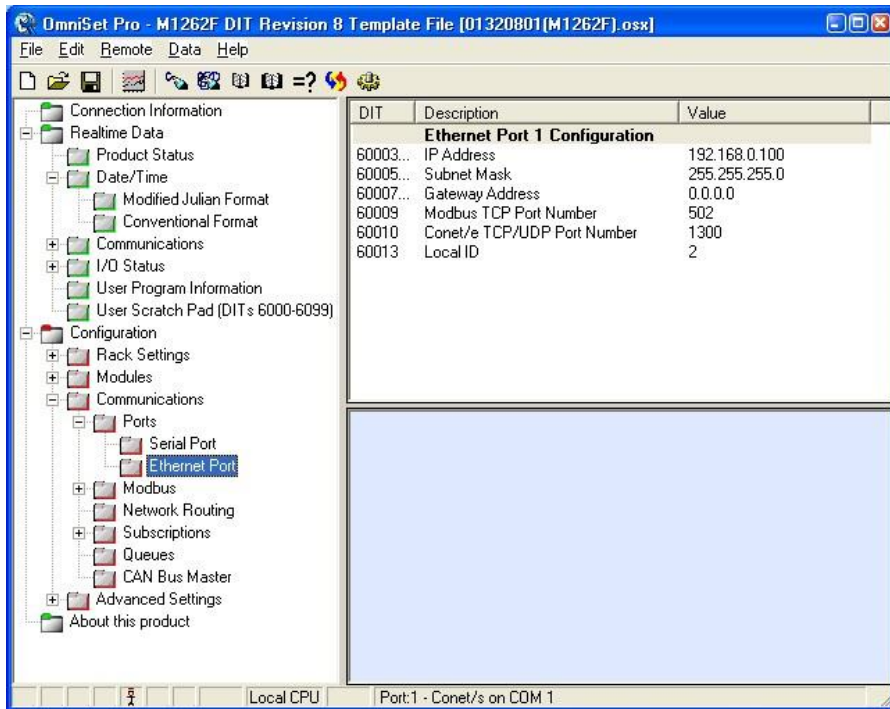
## Ethernet Default Settings

1. The default IP Address is 192.168.0.100.
2. The default Subnet Mask is 255.255.255.0
3. The default Gateway Address is 0.0.0.0
4. The default Modbus TCP Port Number is 502, this must not be changed.
5. The default Conet/e Port Number is 1300, this must not be changed.
6. The default Local ID is 2.

## Changing Ethernet Settings

7. Assemble the Maxiflex base as shown in Figure 1 with the M1262 fitted into the CPU slot and a suitable Maxiflex PSU in the PSU slot
8. Connect power to your system.
9. Connect the M1831 programming cable between the COM port of your PC/laptop and the programming port of the Maxiflex CPU.
10. Open Omniset and click on File->Connect->Maxiflex CPU TAB.

- Select the GROUP Configuration->Ports->Ethernet Port which is found in the left hand pane. Change your Ethernet settings by pointing the mouse to the ITEM you wish to change and clicking on the right mouse button and selecting the New Value option that pops up. Enter you new setting when prompted. Refer to screen grab below.



**Table 1: P3e CPU Front Panel Diagnostics**

LED Legend	LED Colour	Description
CPU OK	Green	ON - CPU is healthy OFF or Flashing – No power applied or CPU Faulty
I/O OK	Green	ON - I/O Module status healthy and I/O Manifest is configured. FLASHING – I/O Manifest is configured but disagrees with installed hardware. OFF – I/O Manifest is not configured.
RUN	Green	ON – user application software is running OFF – No user application software is running Flashing – Terminal interaction with CPU
BATT	RED	ON – Internal battery is LOW or not connected. OFF – Internal battery is good.
SERIAL Rx	YELLOW	ON – data is being received on serial port OFF – serial port receiver is idle
SERIAL Tx	RED	ON – serial data is being transmitted on serial port OFF – serial port transmitter is idle
NET LINKx	GREEN	ON – Ethernet link established, flashing with Ethernet communication OFF – No Ethernet link present
NET 100	YELLOW	ON – 100BaseT Ethernet link established OFF – 10BaseT Ethernet link established

**Table 2: Programming Port Pinout**

Signal Name	DB-9	FCC-68 Pin No.
Rx Data from P3	2	4
Tx Data to P3	3	1
Ground Reference	5	2
All other pins are reserved and must not be connected.		

NOTE: This information is only necessary if you are making up your own programming cable. If you are using a M1831 Programming port cable, simply connect the programming cable between the CPU and PC as per the connectors of the programming cable.

**Table 3: Switch 1 Set-up (Serial Port)**

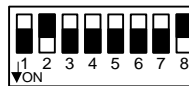
**Communications Protocol**

**Modbus Protocol (Slave device):**

Transmission Mode: ASCII  
 Baud rate: 9600  
 Data bits: 7  
 Parity: none  
 Stop bits: 1  
 Address: see dipswitch

**Serial Port Dipswitch setting**

Switches 1-5: Modbus ID  
 Switches 6-8: Protocol  
 Switch 8 ON = Modbus default



**Conet/s Protocol**

Transmission Mode: RTU  
 Baud rate: 19200  
 Data bits: 8  
 Parity: none  
 Stop bits: 1  
 Address: see dipswitch

Switches 1-5: Conet ID  
 Switches 6-8: Protocol  
 Switch 7 ON = Conet/s default



The default operation is to use the serial port for standard communications allowing the user to get the CPU up and running quickly and easily both on the test bench and in the field. In this case the Serial Port Dipswitch beneath the male, sub-miniature DB-9 connector has the above default configurations. The serial port is also software configurable using the Omniset utility or application program, but when switch 7 or 8 of the dipswitch is turned ON, then the dipswitch setting overrides the software configuration. *To restore the settings to the software configuration, simply set switch 7 or 8 of the dipswitch OFF.*

**Table 4: Serial Port Pinout**

The M1262 P3e CPU allows jumperless conversion between RS232 and RS485 communications. By simply following the appropriate pinout of the serial port connector below it is possible to connect the CPU in either mode without making any hardware or software changes to the CPU.

Pin number	Communication Standard	
	RS232	RS485
1	Do not connect	Rx Data + (In)
2	Rx Data (In)	Rx Data – (In)
3	Tx Data (Out)	Do not connect
4	Do not connect	Tx Data+ (Out)
5	Ground	Ground
6	Do not connect	Vcc
7	RTS (Out)	Do not connect
8	CTS (In)	Do not connect
9	Do not connect	Tx Data – (Out)

### Serial Port Default Settings

1. The default Protocol is Conet/s.
2. The default Baud Rate is 19200.
3. The default Data Bits is 8.
4. The default Parity is None.
5. The default Stop bits is 1 Stop Bit.
6. The default DTR/CTS Handshaking is Off.
7. The default DTR/CTS Timeout (ms) is 0.

### Changing Serial Port Settings

1. Assemble the Maxiflex base as shown in Figure 1 with the M1262 fitted into the CPU slot and a suitable Maxiflex PSU in the PSU slot
2. Connect power to your system.
3. Connect the M1831 programming cable between the COM port of your PC/laptop and the programming port of the Maxiflex CPU.
4. Open Omniset and click on File->Connect->Maxiflex CPU TAB.

Select the GROUP Configuration->Ports->Serial Port which is found in the left hand pane. Change your Serial Port settings by pointing the mouse to the ITEM you wish to change and clicking on the right mouse button and selecting the New Value option that pops up. Enter you new setting when prompted. Refer to screen grab below.

