



MAXIFLEX Hart Input Module

Model M1438A 8H Hart Input Module

DATASHEET



FEATURES

- Connects to eight HART loops, each with up to 15 devices
- Acts as Primary Master in each HART loop
- Facilitates real-time data acquisition to SCADA and DCS
- Fits any Maxiflex I/O Slot.
- Up to 15 M1438A modules in a Maxiflex system.
- Supports both Burst Mode & Polled Mode Operation
- Configurable Poll Timers when in Polled Mode
- Automatic or Manual Polling regime when in Polled Mode
- Up to 32 Custom Query Blocks per loop can be configured
- 500Vdc minimum loop isolation to each HART loop.
- CE approved

The Maxiflex M1438A 8H is an Input Module that acts as a permanent host interface device (primary master) on up to eight Hart networks simultaneously and is used to acquire data from the HART loops and to make the data available for SCADA, data-logging etc. using the Maxiflex system.

The M1438A plugs into an I/O slot on a Maxiflex base and independently interrogates field devices on eight Hart networks, making the data available to the Maxiflex system.

This data may be accessed by the entire range of Maxiflex CPU's. (The NIM is designed to be self configuring for ease of use. Once powered up, the NIM searches for HART devices on each of its eight HART interfaces and builds an inventory of devices found.

Various data elements are continuously and automatically read from the device and stored in the Data Interchange Table (DIT) in the device for access by the rest of the Maxiflex system.

The M1438A handles all HART communications and exchanges data with the system by means of a 8000 register Data Interchange Table (DIT).

All system configuration data and dynamic data can be read and written through this convenient table interface.

This data is then accessible by the CPU, SCADA, DCS or PLC systems as regular data registers in the system. The link to the HART device is made transparent to the rest of the system.





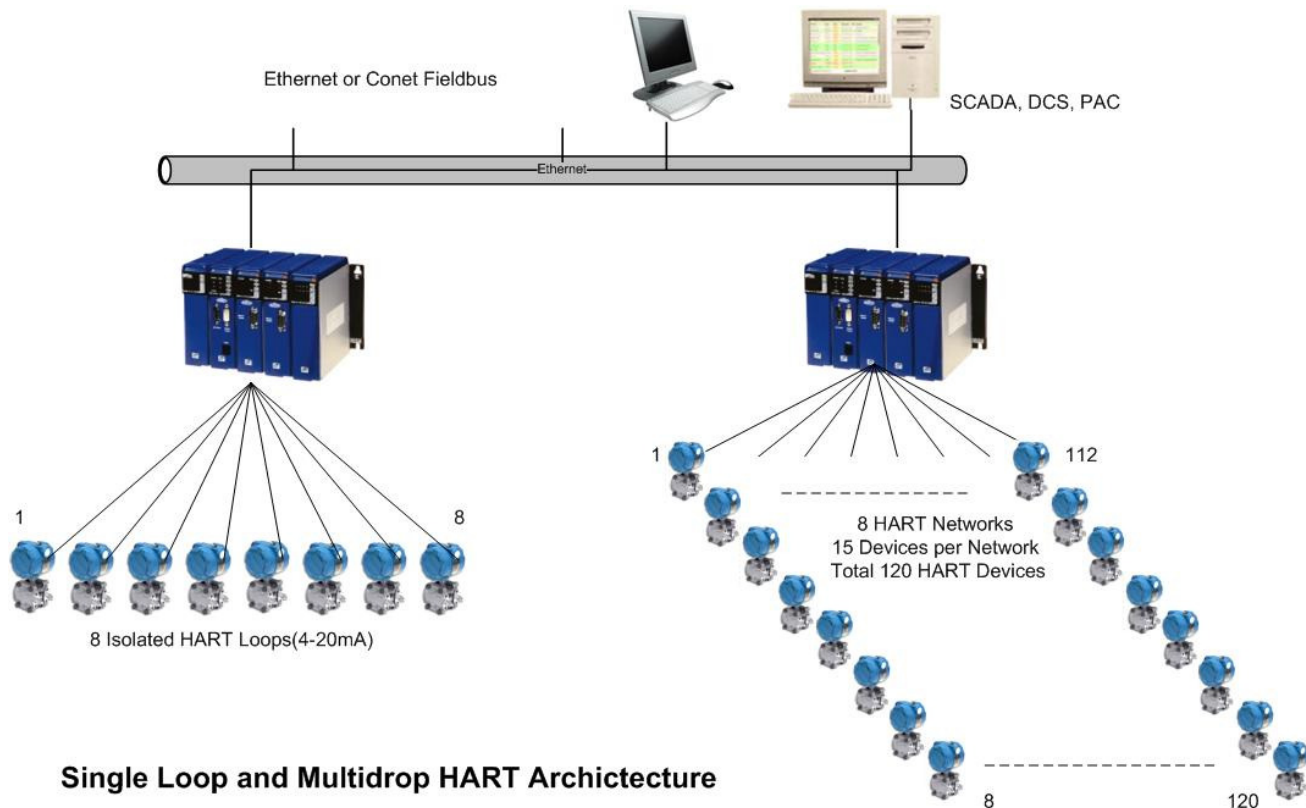
MAXIFLEX Hart Input Module

Model M1438A 8H Hart Input Module

ADVANCED FEATURES

- **Burst Mode** – When configured for use in this mode, there can only be One Slave device connected on each loop.
- **Polled Mode(Automatic Polling)** – When configured for automatic polling the Master(M1438A) will poll all transmitters up to 15 connected to each loop at the same rate. After seven seconds the Master will search for a device which is NOT online. If the device is found then it will be switched to online. *Note: When Automatic polling is selected the Programmable Poll Timers for each loop are ignored.
- **Polled Mode(Manual Polling)** - When Manual polling is selected for the loop, all transmitters connected to the loops are polled according to the Poll Timer setting. The User can select from a range of polling rates which range from As fast as Possible up to a maximum of 5 seconds per device. The polling engine will only search for Offline devices that have their poll timers configured.
- **Custom Query Block Configuration** - The user can configure up to 64 Custom Query Blocks per loop in the 8H. Each query block can contain any valid HART command and can address any device on either of the HART loops. Each Query Block can be configured as a “one-shot” query that is triggered by the user, or can be configured as a cyclic query where the Query is triggered on a regular basis by the 8H. The status of each Query is presented in the Query Status DIT registers. These registers indicate the success or failure of each query last time it was sent.

APPLICATION EXAMPLE



Single Loop and Multidrop HART Architecture





MAXIFLEX Hart Input Module

Model M1438A 8H Hart Input Module

Specifications

HART Loops

Quantity	Eight independent loops
Number of Field Devices	Up to 15 devices per loop
Baud Rate	300 – 38,400 baud.
HART operating mode	Primary Master
Isolation	500Vdc loop to loop and loop to logic
Maximum Loop Voltage	30Vdc
Minimum Loop Resistance	230 ohms
Maximum Loop Resistance	1100 ohms
Transmitted signal level	400mV pk-pk minimum 600mV pk-pk maximum
Receiver Sensitivity	120mV pk-pk minimum 2000mV pk-pk maximum
Receiver Threshold	Ignores < 80mV pk-pk
DC Load Impedance	2 microAmps Max @ 60°C and 40V
AC Load Impedance	10 MicroFarads Typical

Memory

Data Interchange Table	8000 16 bit Registers
------------------------	-----------------------

Front Panel Indicators

OK (Green)	On = Healthy Flashing or Off = Module faulty
H1-H8 (Green)	Flashing = Search for Devices On = Data transmitted / received. Off = Idle

Environmental

Operating Temperature	-10°C to +50°C (14°F to +122°F)
Storage Temperature	-40°C to +70°C (-40°F to +158°F)
Humidity	95% max. at 40°C (104°F) non-condensing.
Protection	Electronics conformal coated

Logic Power Consumption

From Logic Power Supply	250mA from 5Vdc max.
-------------------------	----------------------

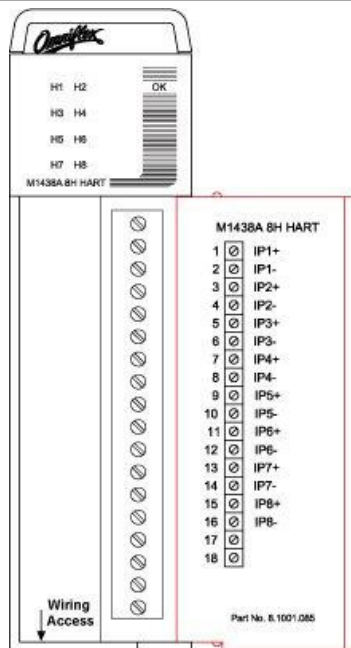
Mass

Excluding Packaging	390g (13.8oz)
Including Packaging	480g (16.9oz)

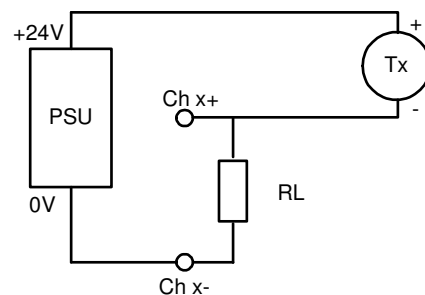
Ordering Information

Description	Order Code
8 HART Inputs Module	M1438A

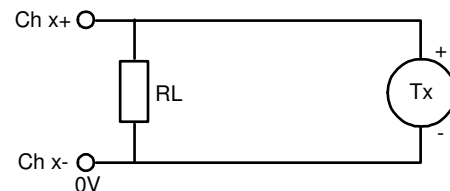
HART Connection Details



Connection Diagram



Two-wire transmitter connection



Four-wire transmitter connection

