



MAXIFLEX 48Vdc Logic & Field Power Supply Module

Model M1104A – 48Vdc Logic Power Module with Auxiliary 24Vdc Field Supply.

DATASHEET



FEATURES

- Operate MAXIFLEX systems from 48Vdc
- Fits in PSU Slot of MAXIFLEX Base
- 24Vdc 1Amp Field supply output for powering I/O included
- Wide input operating range.
- Power Supply Monitoring for reliable system operation
- CE certified for international application.
- Logic Supply Healthy indication

The M1104A Power Supply Module is powered from an external +48Vdc (nominal) supply, and provides the primary logic power for a MAXIFLEX I/O Base, as well as a 24Vdc 1Amp isolated supply for powering I/O.

This power supply module operates over a wide input voltage range of 43-55Vdc, allowing Maxiflex systems to

be operated on 48Vdc battery systems.

All connections to the module are made via screw terminals located behind the door on the front of the module. These terminals are removable for easy module replacement.

SPECIFICATIONS

DC Input

Power Source	43-55Vdc 50Watts max.
Protection	2A Fuse (Slow Blow)
Efficiency	>80% at Full Load

Logic Supply Outputs

+5V Logic Supply	5.1V \pm 2% 3A maximum
+12V Logic Supply	12V \pm 15% 1A maximum

Field Supply Output

+24Vdc Field Supply	24Vdc \pm 15% 1 Amp max.
---------------------	----------------------------

Isolation

Input to Logic	2.5kVrms for 60 seconds
Input to Field Supply	2.5kVrms for 60 seconds
Input to Earth	0.5kVrms for 60 seconds

Front Panel Indication

POWER (Green)	On = Logic Supplies Healthy
O/LOAD (Red)	On = Field Supply is overloaded
SHUTDOWN (Red)	On = Power Supply has shut down

Input/Output Terminations

Terminal Type	Screw clamp Plug-in Terminal Blocks
Wire Size	2.5mm ² maximum For manageable wiring to the module, 1.0 mm ² is recommended

Electromagnetic Compatibility

Impulse Withstand Test

Between positive and negative input terminals	4kV; 1.2us/50us test pulses
---	-----------------------------

Between either input terminal and earth	1kV; 1.2us/50us test pulses
---	-----------------------------

Impulse withstand Test

Across Inputs	4kV noise bursts between inputs in accordance with IEC801-4, class IV.
---------------	--

Environmental and Safety

Operating Temperature	-25°C to +60°C (-13°F to +140°F)
Storage Temperature	-40°C to +70°C (-40°F to +158°F)
Humidity	95% max. at 40°C (104°F) non-condensing.
Environmental Protection	Electronics conformally coated

Compliance to Standards

Safety	Conforms to IEC950; EN60950
Emissions	EN55011 and EN550081-2:1994 Group 1, Class A

Mass

Excluding Packaging	520g (18oz)
Including Packaging	610g (22oz)

Ordering Information

Model Name	Order Code
Maxiflex 48DC LF PSU	M1104A

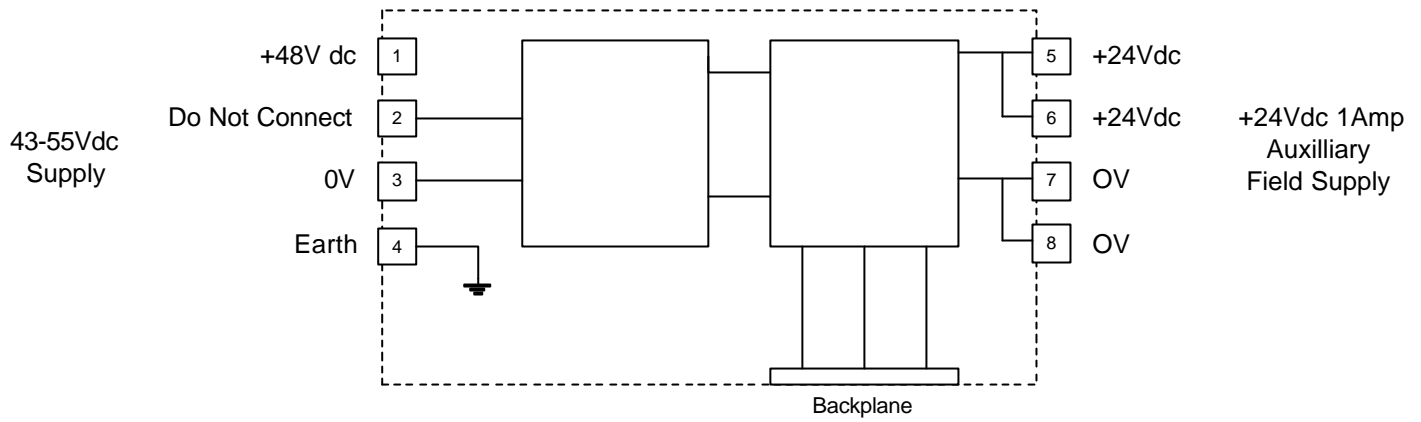




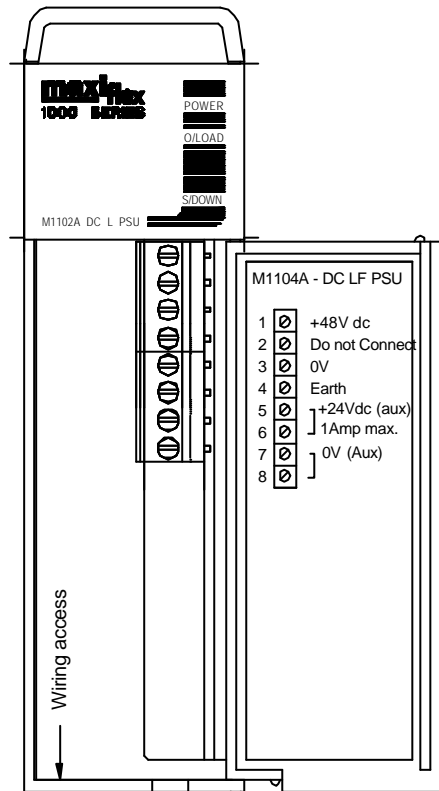
MAXIFLEX 48Vdc Logic & Field Power Supply Module

Model M1104A – 48Vdc Logic Power Module with Auxiliary 24Vdc Field Supply.

ELECTRICAL CONNECTIONS



MECHANICAL ARRANGEMENT



Note: The LED indicators can only be seen when illuminated.

