



Omniflex EziFORTH Programmer's Workbench

Model CC031A Omniflex EziForth Programmer's Workbench.

DATASHEET

- EziFORTH software tools for programming EziFORTH applications
- Remote Programming Support
- Microsoft Windows 2000/XP compatible
- Online monitoring and debugging
- Bundled with the Omniset Pro Configuration Software to create a powerful integrated configuration, programming and debugging environment.



The Omniflex EziForth Programmer's Workbench is development software that runs under Microsoft Windows for developing control application programs using the EziFORTH programming language.

These application programs can be run on a range of Omniflex products such as the 'T' range of Maxiflex CPU Process Automation Controllers, the range of Maxiflex Network Interface Modules, and the Teleterm M2 range of RTU's. Consult your Omniflex distributor for a list of available products.

For program development, the Programmer's Workbench provides a powerful and intuitive Windows based textual editor and terminal emulator with syntax checking and colour coding, for enhanced ease of use.

Bundled with the Omniflex EziFORTH Programmer's Workbench is the powerful but easy to use Omniset Pro configuration utility allowing complete control of software programming and configuration extensions for your entire network without leaving the Workbench environment.

The Workbench communicates with the target processor through a communications server installed with the workbench. This communications server provides the ability to download, monitor and debug programs remotely over any of the supported networks.

The Omniflex EziFORTH Programmer's Workbench offers the following features:

- Project Management
- Colour Coded textual editing
- Modular Programming
- Terminal Emulation
- Syntax checking
- Remote Programming over the network
- Simultaneous Target Register Viewing and Editing using "Omniset", the powerful companion configuration editing tool.



Omniflex EziFORTH Programmer's Workbench

Model CC031A Omniflex EziForth Programmer's Workbench.

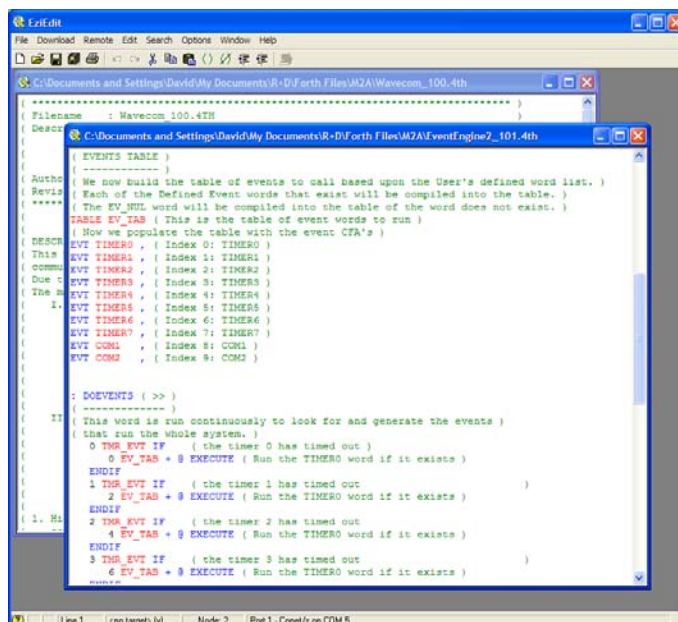
THE PROGRAMMING ENVIRONMENT

Overview

The EziFORTH Programmer's Workbench is a complete programming environment used to develop complex control algorithms and communications protocols. The Workbench provides tools for editing, debugging, downloading, testing and monitoring, EziFORTH applications.

The EziFORTH language is a powerful programming language suited for real-time applications. EziFORTH begins with a powerful set of standard commands, then provides the mechanism by which you can define your own commands. The process of building definitions based upon previous definitions in modular fashion allows you to construct dialects of the language specifically tailored for your applications. This, for example lends itself well to programming of protocol drivers.

EziFORTH is a truly interactive language. New words can be compiled on the spot, and tested on the target hardware through the terminal emulator supplied with the EziFORTH Workbench.



GENERAL SPECIFICATIONS

Minimum System Requirements

Disk Space Required	15Mbytes
Operating System	Microsoft Windows 2000(SP2), or XP.
Communications interfaces supported	RS232 Port Ethernet Port Conet Port (requires plug in card) (Options selected for use depends upon the hardware and application).

Supplied Components

- The Omniflex EziFORTH Programmer's Workbench is supplied on CD with the following components ready to install:
 - Omniflex EziFORTH Programmer's Workbench
 - Conet Network Communications Server Engine
 - Omniset Pro Configuration Software
 - Full documentation in pdf format.

Development Tools

- EziEdit Editing Space
- EziTerm Terminal Emulation Space
- Omniset Configuration Tool and Template builder
- On-line help.

Remote Programming

- Access Target controllers over any supported network type.
- Addressing of targets from the Workbench allows multiple targets to be programmed from a single network connection
- Indirect access of remote targets on sub-networks using Conet Routing technology.

Omniset Pro Bundled

- The Omniflex EziFORTH Workbench is supplied bundled with Omniset Pro, the powerful utility for configuring and monitoring most Omniflex products.
- Run multiple copies of Omniset Pro together with the Omniset EziFORTH Workbench for powerful monitoring and debugging of networked control systems.

OPC Compatible

- Compatible with Conet OPC server running on same machine (see separate OPC Server documentation for details)

Ordering Information

Model Description	Order Code
Omniset Programmer's Workbench.	CC031A