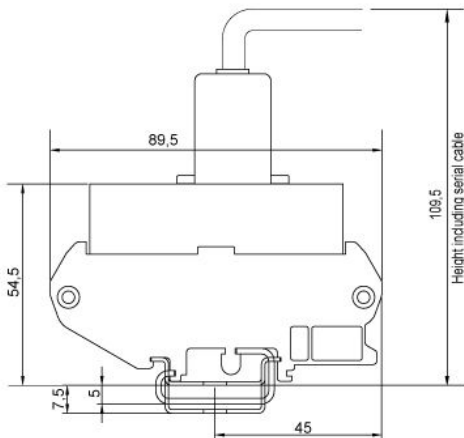
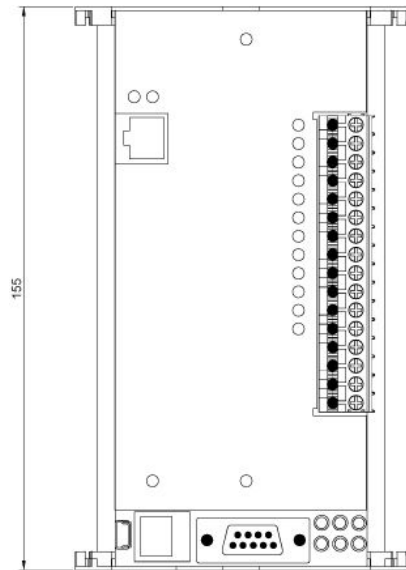


MECHANICAL DETAILS



INSTALLATION GUIDE

TELETERM Model M2e C2361C
RTU with Ethernet Port



The TELETERM C2361C Remote Terminal Unit (RTU) is designed for remote data acquisition over Ethernet backbones in large campus environments. Using M2e analogue and digital field instruments as well as water, electricity and gas meters can be monitored.

The inputs accommodate common analogue and digital sources, including pulse. Configuration of I/O as digital outputs is also possible. Two 4-20mA analogue outputs are provided. For detailed operation consult User Manual and Data Sheet.

FEATURES

- 12 Discrete inputs/outputs plus 2 serial ports
- 9-30V dc powered
- 10/100 Ethernet port
- Micro SD card for off-line data logging
- Integral Real-Time Clock with battery backup
- Wide operating temperature range



CONFIGURATION

Configuration is performed using the OMNISET Software Configuration Utility running on a Windows PC, using the programming socket in the front of the module. Use C2361C Template, and Programming Cable to set the all configuration parameters.

See Help in software Template for more detailed procedure.

Key Product Specifications

Power Supply

Supply Voltage	9-30V dc
----------------	----------

Selectable Input Ranges

Analogue/Digital Input

Voltage Input Range	0 to +5.5Vdc inputs 3-10; 0-30V inputs 1,2,11,12
Accuracy	0.1%
Input Impedance	5k standard input, >800k on Hi-Z

Output

Current maximum range (analogue)	0 to +23mA dc into 0V connected load
Digital Output	Switch to +V
Digital Output Load Regulation	<3V at 100mA load

Output Accuracy

Non-Linearity (analogue)	<0.25%
--------------------------	--------

Environmental Conditions

Operating/Storage Temperature	-10°C to 60 °C / -25°C to 85 °C
-------------------------------	---------------------------------

RS485/232 Connections

Pin	Communication Standard	
	RS232	RS485
1	Do not connect	Rx Data + (In)
2	Rx Data (In)	Rx Data – (In)
3	Tx Data (Out)	Do not connect
4	Do not connect	Tx Data+ (Out)
5	Ground	Ground
6	Do not connect	Vcc
7	RTS (Out)	Do not connect
8	CTS (In)	Do not connect
9	Do not connect	Tx Data – (Out)

Mechanical

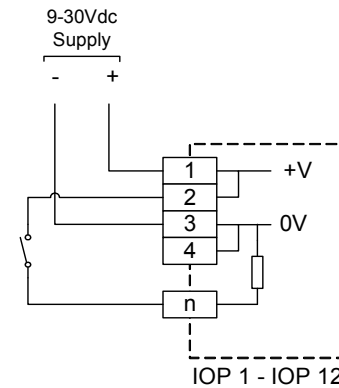
Dimensions (W x H x D)	155 x 95 x 55mm (W x H x D)
Weight packed/unpacked	350g / 250g approx.

Order codes

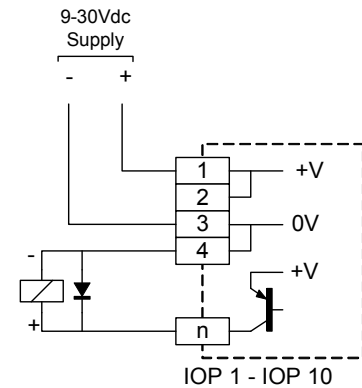
C2361C	Teleterm M2e RTU Module with Ethernet
M1831A	MX Programming Cable

APPLICATION EXAMPLES

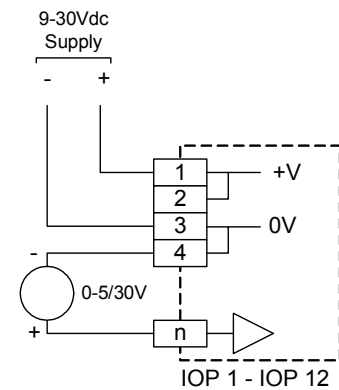
DIGITAL INPUTS



DIGITAL OUTPUTS



ANALOGUE INPUTS



ANALOGUE OUTPUTS

